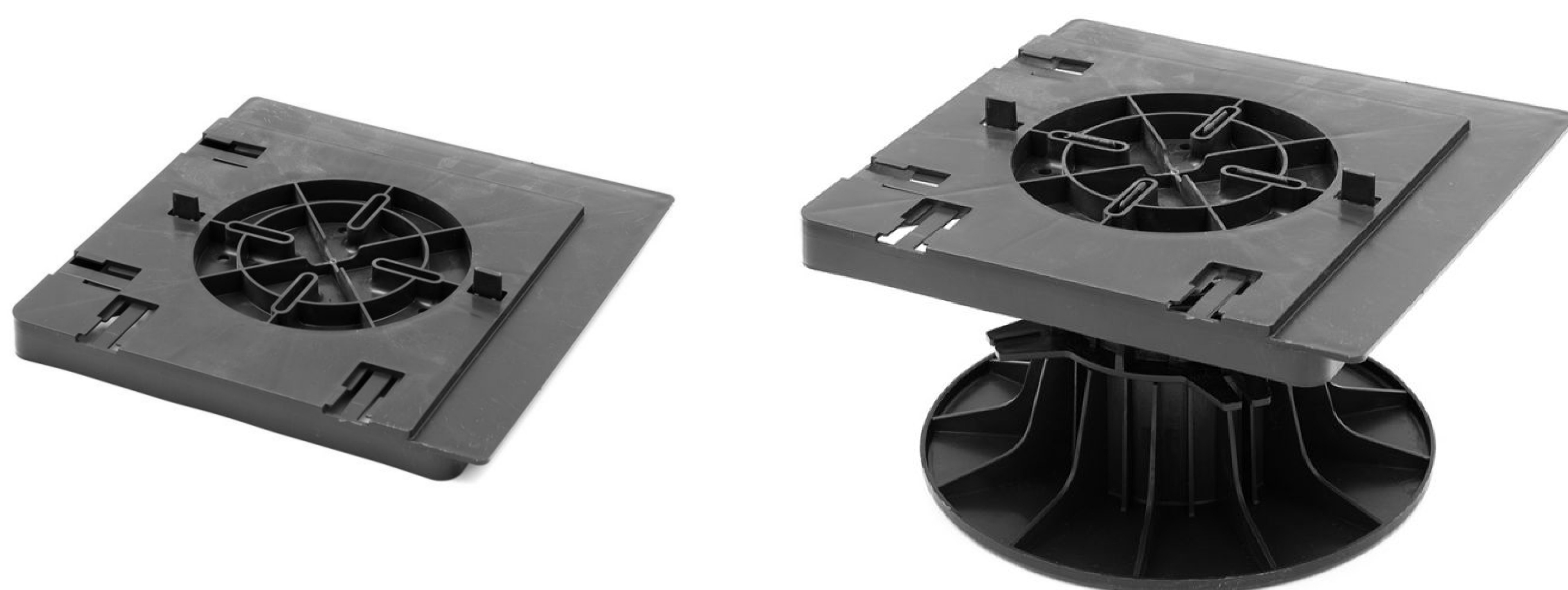


Slab plate

Stabilizes the slab for installation against a wall.



Made In France

Application & use

Stabilizes the slab for installation against a wall. Combined with the lateral support it allows the realization of finishing with plinth or the creation of stairs.

Increases the height of the pedestal by 13 mm.
Compatible with all pedestals except 8/20 mm.

Technical Characteristics

Composition : polypropylene (recycled and recyclable)

Color : black

Origine : France

Garantee : 10 years

Conformity : norm DTU 43.1

Use : pedestrian only

Dimensions : 206 mm x 206 mm

Resistance to temperatures : from -40°C to +60°C

Resistance to atmospheric agents : UV and freeze

Product Advantages

- + Allows the aesthetic finish of a terrace on pedestals
- + Allows slabs against a wall to be installed and stabilized
- + Allows to realize the closing of the terrace thanks to the lateral support
- + Allows the creation of stair steps
- + Fits on the head of the pedestal without fixing
- + Breakable lugs
- + **Additional products :**
 - Lateral risers supports
 - YEED Clip System

