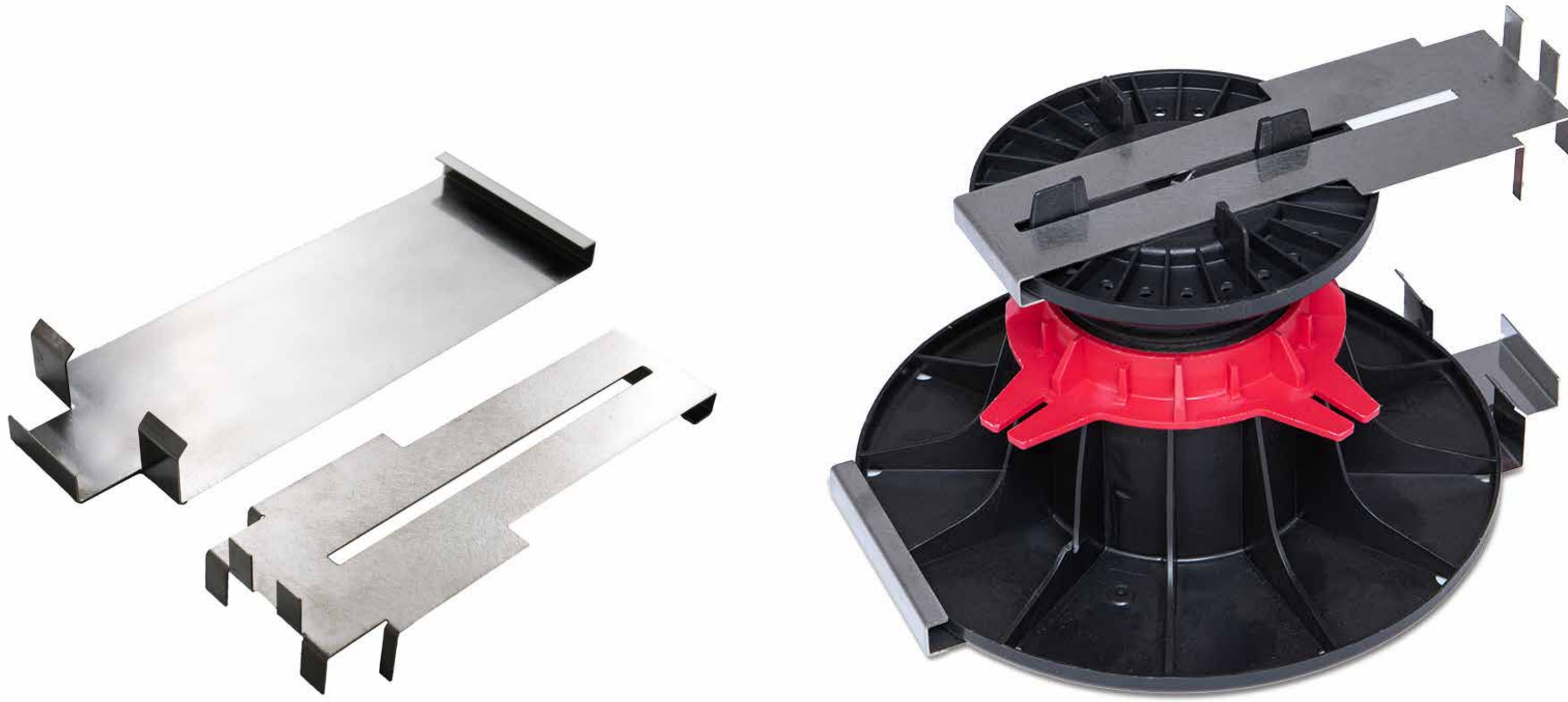


YEED ClipSystem

Enables the aesthetic closure of the end of the terrace while stabilizing the slabs.



Made In France

Application & use

The YEED ClipSystem, made of stainless steel, is a 2 in 1 accessory : Firstly, it closes the terrace aesthetically by simply clipping onto the ends of the terrace.

Secondly, this durable lateral closure accessory also replaces the slab plate whose function is to stabilize the slabs at the ends of the surface and thus avoid any sensation of tilting.

It is compatible with the pedestals of paving range from 40/60 mm. It is made up of 2 parts:
the top clip which is clipped onto the 2 lateral lugs on the head of the pedestal, and the bottom clip which is clipped onto the base of the pedestal.

Technical characteristics

Composition : Cold rolled stainless steel 1.4016 BA

Colour : metal grey

Dimensions : top clip : 18,5 x 6,5 cm / bottom clip : 22 x 8 cm

Resistance to temperatures : +350°C /

Resistance to atmospheric agents : UV and freeze

Product advantages

- + Allows the aesthetic finish of a terrace on paving pedestals
- + Stabilises the paving at the side of the terrace
- + Stainless Steel is rot-proof
- + Resistance to heavy charges
- + Resistance to temperature variations and atmospheric agents
- + No tools are required for the installation of the terrace with its accessory

