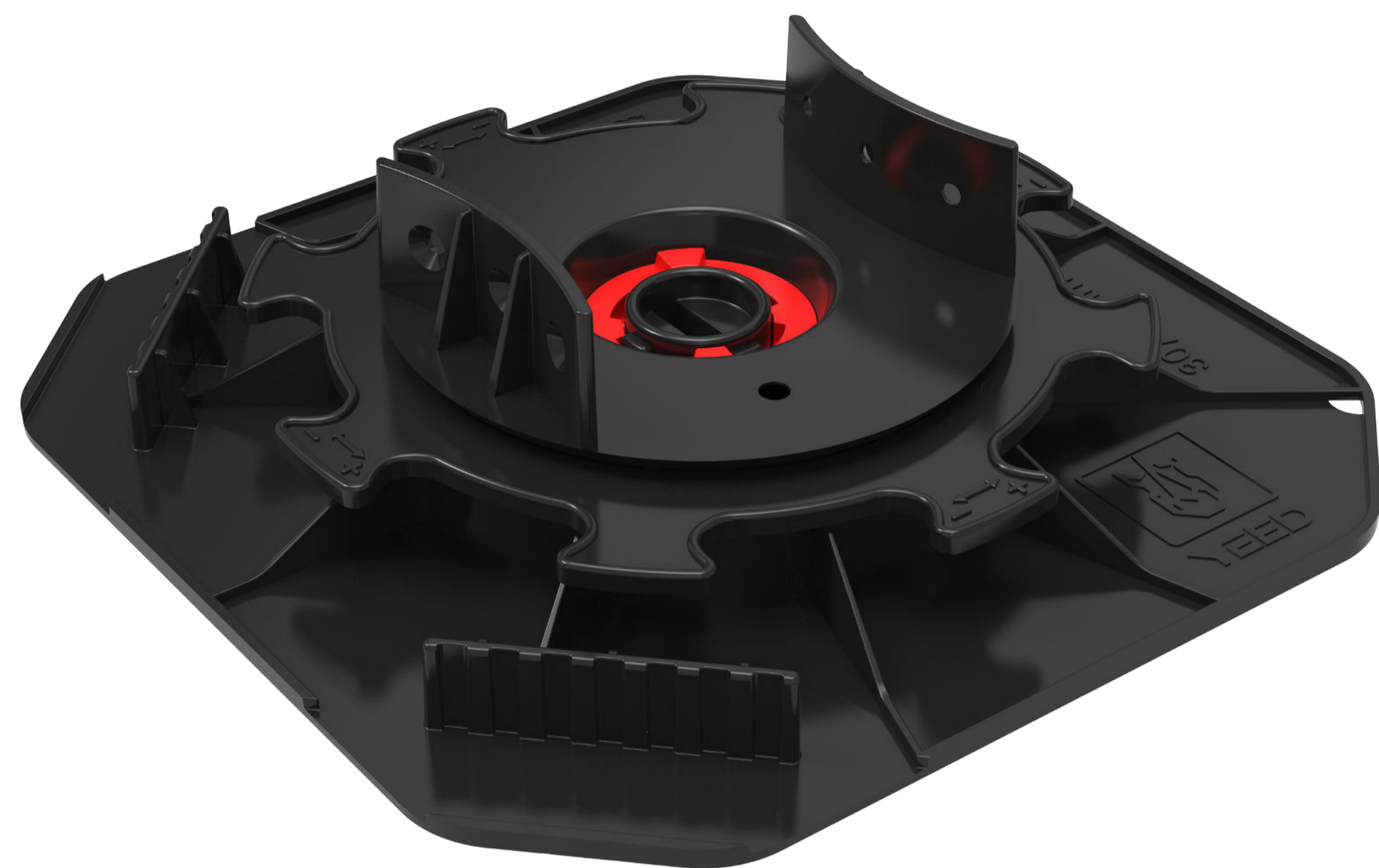




Recycled and recyclable



Made in France



UNIKA adjustable pedestal 30/40 mm

Discover the most efficient solution for any wooden deck installation. The UNIKA pedestal for wooden deck is adjustable in height from 30 to 40 mm. It can reach up to 1 meter in height used with the extension accessory. The pedestal is easily adjustable to the millimeter thanks to the adjustment ring: from the top with the YEED tightening key or manually on the side.

The UNIKA pedestal is an all-in-one revolution: it has 2 lugs that adapt perfectly to any size of joist (up to 74 mm) in wood, aluminum or composite. In addition, thanks to the red clamping screw, the head becomes self-leveling or remains fixed.

A noter : Toujours calculer la hauteur à rattraper en déduisant l'épaisseur du revêtement afin d'obtenir la taille de plot nécessaire

Application & use

Creation of terraces in porcelain stoneware, stone, concrete or gratings for pedestrian use.

The installation on pedestals requires the use of a covering with a minimum thickness of 2cm. It is possible to use tiles (porcelain stoneware), concrete slabs, reconstituted or rectified natural stone (5cm thick)

Technical characteristics

Composition: polypropylene (recycled and recyclable)

Color: black and red*

Origin: France

Garantee: 10 years

Conformity: norm DTU 43.1

Use: pedestrian only

Weight: 284g

Base dimension: 200 mm x 200 mm

Head diameter: 142 mm

Lugs height: 25 mm

Resistance to temperatures: from -40°C to +60°C

Resistance to atmospheric agents: UV and frost

Load resistance: up to 1 ton

Product benefits

- + Easier and faster to use
- + Square and pre-cut base plate, which adapts perfectly to corners and angles
- + Height adjustment on the side manually and on top with the YEED tightening key
- + 2 lugs that adapt to any joist width up to 74 mm
- + Self-leveling or fixed pedestal head
- + **Compatible accessories**
 - **YEED tightening key**